

Adi Avidani

/2023



Dissolving Lines

Led by material practice, Avidani aspires to push the limits of materials by leveraging techniques originating from 3D modeling and its associated aesthetics and translating these digital methodologies into the realm of sculptural handcrafted pieces, mold-making, and slip-casting techniques.

Her practice delves into the vast spectrum that bridges the domains of art and design, and the role of craft practitioner, encompassing diverse manifestations and possibilities.

SW, EW, porcelain, glazes, stains, slips.



Components

A meticulous investigation into the morphology of a divided cube, with a particular focus on the transformative processes of malformations. This exploration encapsulates the interplay between contrasting qualities, including softness and hardness, dynamism and stasis, while also evoking subtle allusions to the human form.

The installation is made from 30 cubes, and each cube consists of 5 different components. All components are dynamic, balanced and can be reassembled in different ways to create different colour combinations and structures.



Components as Stairs

Avidani embarks on an exploration of symbolic divisions between bodies. This fascination with liminal spaces, dissolving lines, and porous boundaries permeate the entire project while remaining firmly grounded in a *material-led practice* that transforms the studio into an expansive arena for visual and tactile research.



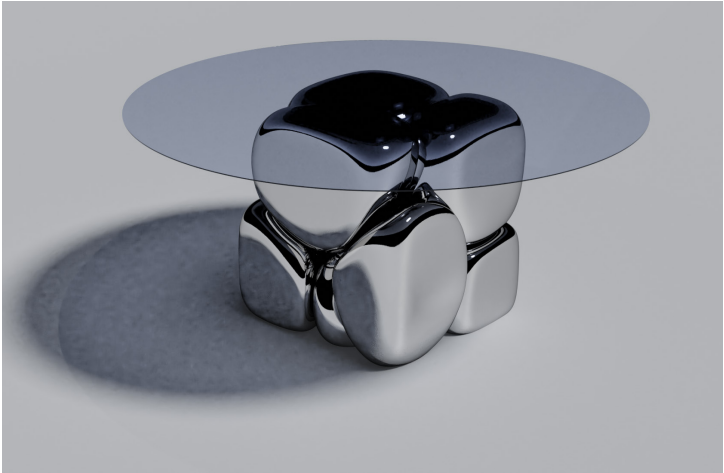








Bridging Art & Design



White Cube

One-of-a-kind 8 piece cube, made from high fire stoneware, glazed white to a sandy texture.

Made in a press mould technique. The original positives of the sculptures were made from plaster, in a unique method the artist have been developing over the past year.





Contact

www.adiavidani.com
adiavidani@gmail.com
[@adi_avidani_ceramics](https://www.instagram.com/adi_avidani_ceramics)
(+44) 7340 665920

